

1

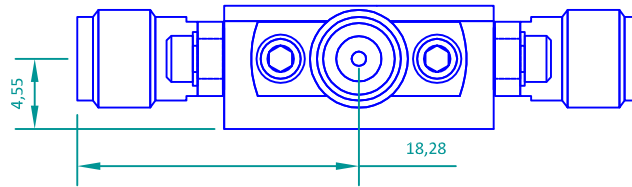
2

3

4

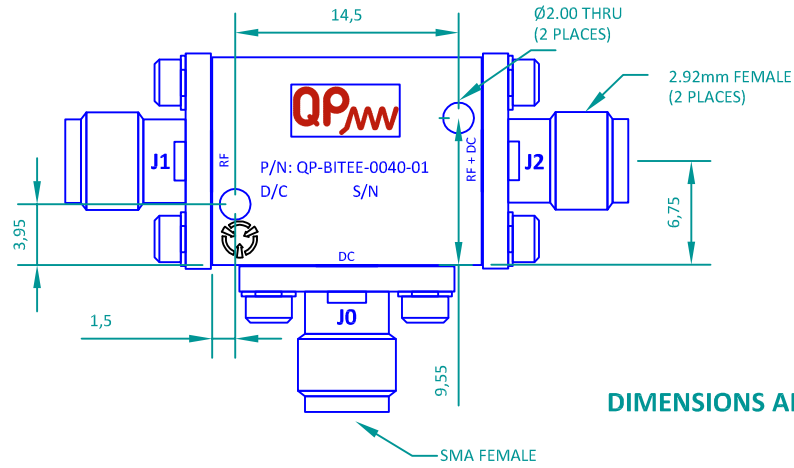
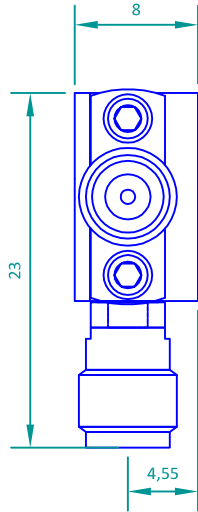
A

A



B

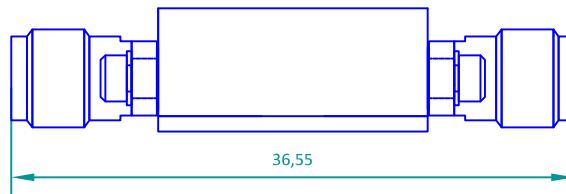
B



DIMENSIONS APPEAR IN mm

C

C



## ELECTRICAL SPECIFICATIONS:

FREQUENCY RANGE:	10 MHz - 40 GHz
INSERTION LOSS:	1.5 dB TYP. 1.8 dB MAX.
VSWR:	1.6:1 TYP. 2.0:1 MAX.
DC VOLTAGE:	16 V MAX.
DC CURRENT:	250 mA MAX.

D

D

## ENVIRONMENTAL RATINGS

- TEMPERATURE:	-40°C TO +85°C (OPERATING) -55°C TO +125°C (STORAGE)
- HUMIDITY:	MIL-STD-202G, METHOD 103B COND. B
- SHOCK:	MIL-STD-202G, METHOD 213B COND. B
- VIBRATION:	MIL-STD-202G, METHOD 204D COND. B
- ALTITUDE:	MIL-STD-202G, METHOD 105C COND. B
- TEMP. SHOCK:	MIL-STD-202G, METHOD 107G COND. A

E

E



NOTE: The above specifications are subject to change or revision. Specifications are at 25°C unless stated otherwise.

F

F

**QP microWAVE**  
CÓLQUIDE 6  
28231 LAS ROZAS  
MADRID, SPAIN

APPROVALS	DATE	SIGNED	DESCRIPTION: <b>BIAS TEE 10 MHz - 40 GHz</b>	REV.:	SHEET:
DRAW	29/04/16	BME	CODE: <b>QP-BITEE-0040-01</b>	002	1 OF 1
CHECKED	29/04/16	JAV			
APPROVED	29/04/16	JAV			

1

2

3

4